



# INSTALLATION GUIDE



## CONTENTS:

Controller .....	2
Sensor .....	3
Sensor Pairing .....	3
Sensor Battery Replacement ..	4
Warranty & Returns .....	4

Contact us:

**www.RoadrunnerComfort.com**

Email: [info@RoadrunnerComfort.com](mailto:info@RoadrunnerComfort.com)

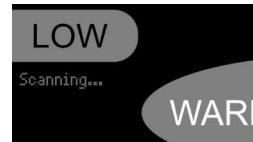
Text/Voice: 978-578-6298

Made in Los Ranchos, NM  
by Nangeroni Design



## Sensor Pairing *(continued)*

4. Select BACK twice. If OFF screen shows, select **Auto**. You should soon see “Scanning...”. Wait for a popup to appear.



5. When the popup “Pair with...” appears, select **YES**. After some more scanning, you should soon see the Sensor temperature appear on the upper left side of the screen.



## Sensor Battery Replacement

The sensor battery should not need replacement for at least several (if not 5+) years, but will eventually need changing. When that time comes, you can pull out your **User Guide** which has illustrated instructions, or you can go to the Roadrunner Comfort website which has the same information. Either way, we’ve got you covered. We’ll even, if you can’t easily find the right one, send you a replacement battery for a few dollars.

More information: [www.RoadrunnerComfort.com](http://www.RoadrunnerComfort.com)

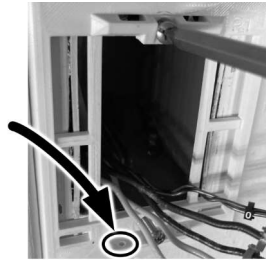
## Satisfaction Guaranteed Warranty & Returns

All returns within 60 days in good, resalable condition, will be refunded in full. The Roadrunner Comfort controller and sensor are warranted to be free from defects for two full years. For any failure not due to external electrical disturbance, invasion by fluid, temperature extremes, or other external cause, Nangeroni Design will repair or provide a replacement at our discretion. Nangeroni Design is not responsible for any damages beyond the unit itself due to any cause, including incorrect installation, improper usage, or defects in the evaporative cooler being controlled.

# Tools Needed: Phillips Screwdriver

## Controller

1. Turn OFF power to the cooler controller at your home breaker (fuse) panel. Remove existing controller (if any; keep track of wires connecting to pump, low and hi fan, hot/ACL and ground/ACN). Install wall plate, **small holes towards bottom**.



2. Connect controller wires, **hot (ACL, yellow) wire last**.

### Wire Colors:

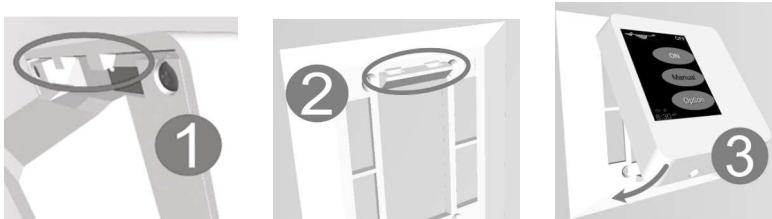
- ACL (HOT): Yellow
- ACN (GND): Black
- Fan Low: Green
- Fan High: Red
- Pump: Blue



3. Remove both partially-inserted screws from controller bottom edge.



4. Hook controller top tabs (1) over wall plate catches (2). Swing body downward (3) against wall plate.



5. If resistance is felt, check that tabs are **fully seated**, and wiring is **deep enough** inside switch box. **DO NOT FORCE!**

6. Secure controller to wall plate with 2 screws.

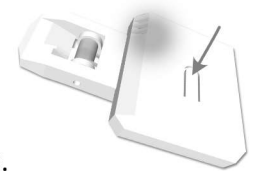


7. **Restore power** to the controller via your home's breaker panel. On the controller screen, select "YES" to enter WiFi network name and password (**preferred**), or "NO" to set the time of day manually.



## Sensor

1. Energize your sensor by pressing and holding the tab until the blue light flashes. This might take a couple of tries.



2. Clip the sensor onto your cooler vent within 30 feet of the controller.



## Sensor Pairing

The Roadrunner Comfort is provided with the sensor **already paired** with the controller, but if they are unable to connect after several minutes, or after replacing the sensor battery, you may need to re-pair them.

1. Press and hold the tab until the blue light shines from within, as described above.

2. On the controller, select **Option** then **Setup**.

3. If the Sensor button indicates **Unpaired**, skip to step 4.



Otherwise, select **Sensor**. A popup will ask if you want to clear the sensor pairing. Select **YES**.

